

SUPERCRAPE SNAPSHOT - ISSUE #5

BRIEF

Clients	RMS Cranes, Baker Steel & WAPA
Projects	Precision Lifting inside Gym, Installation of Roof Panels & Replace Power Source Batteries
Location	Windsor, Denver & Estes Park, Colorado
Equipment	Maeda MC285CB & Maeda MC405 & Maeda MC285

Preston Rentals recent jobs we've done (SuperCrane™ division edition):

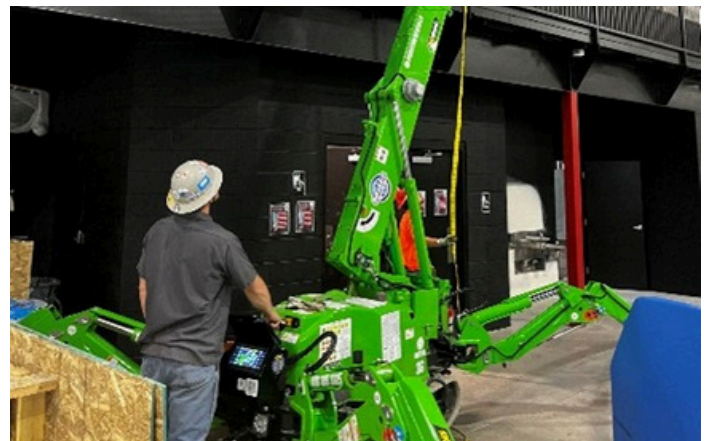
Our SuperCrane™ fleet recently assisted more customers in completing their large-scale projects...

Preston Rentals Achieves Precision Lifting Inside Gym – Maeda MC285

RMS Cranes faced a unique challenge: hoisting large ice coolers and gym equipment onto the second floor of a mezzanine. This lifting equipment needed to be small enough to fit through the gym's side door and maneuverable enough to operate effectively within the confined space. Additionally, the setup required flexibility due to limited space and the need for precise positioning.

Preston Rentals provided the perfect solution with our [Maeda MC285](#), a zero-emissions mini crane renowned for its compact size and precision. The small stature of our crane allowed it to easily access the gym. It was also versatile enough to set up in a cramped area with two of its outriggers extended into the bathrooms. Our crane's wireless remote-control allowed the operator to work from the second floor, while the crew rigged the equipment from below, ensuring seamless coordination. The boom and swing limit switches were crucial in this scenario, enabling the operator to prevent the crane from swinging or booming up beyond set angles, which was vital in the tight workspace.

RMS Cranes was extremely satisfied with the performance of our Maeda mini crane, which enabled the efficient and safe repositioning of the ice coolers and gym equipment. We look forward to providing RMS Cranes with more innovative lifting solutions for their future projects.



Baker Steel Benefits from Our Efficient Solutions for Lifting in Tight Spaces - Maeda MC405

Baker Steel turned to Preston Rentals once again for our small but mighty mini crane fleet. Tasked with installing prefabricated roof panels on an extension to a house, they needed a machine that could navigate a tight alleyway with obstacles like power lines and nearby structures.

Preston Rentals recommended our [Maeda MC405](#) as its diminutive size would enable it to fit into the restricted work area with ease. With up to 8,480lbs of lifting power, this mini crane would also be well equipped to facilitate Baker Steel's required loads.



Despite the tight quarters, the crane's precision and versatility enabled the crew to maneuver around obstacles and to safely and quickly install the roof panels. This showcases the effectiveness of our mini cranes in challenging urban environments. We're proud to continue supporting Baker Steel with our tailored lifting solutions and look forward to collaborating on more projects.



WAPA Praises the Precision and Power of Our Mini Crane - Maeda MC285

The Western Area Power Administration (WAPA), which manages federal electric power marketing and transmission across 15 Central and Western states, faced a critical challenge at one of their power plants in Estes Park, Colorado. They needed to replace power source batteries in a highly confined area with overhead power lines that limited their equipment options.



Understanding the unique constraints of this job, Preston Rentals recommended our Maeda MC285 for the task. Thanks to its compact size and versatility, the MC285 easily maneuvered into the tight space, allowing WAPA to quickly execute the battery replacement with precision and safety. In previous projects, WAPA had rented larger cranes that were positioned outside the power plant to reach over the structure. However, this was a process that was not only time-consuming but also costly.

The Maeda MC285's ability to operate in restricted areas without compromising on performance was a game-changer for WAPA. This successful project has paved the way for future collaborations between WAPA and Preston Rentals.